



**LED Fusion Pro Series**  
ALL-IN-ONE LED SOLUTION

*Calibre*

## About Calibre

Multi-award-winning British company Calibre is a pioneer in image processing technology. Over the past 30 years, it has achieved world recognition with the Queen's Award for Enterprise and was one of the designated brands for video processing in the Olympic Games.

Calibre is a market leader with innovation, providing image scaling and processing technology for use in broadcast and television, large venue projection and LED videowalls. Calibre became part of Coretronic Corporation in August 2017, which is a milestone in the global chain of the Coretronic Group. Coretronic will continue expanding its international market share, cultivating the industry's best talent, innovating in technology and providing each customer with added value.

[www.calibreuk.com](http://www.calibreuk.com)



Innovative Product 2020  
Taiwan Digital Signage  
Awards



Innovative Product 2019  
Taiwan Digital Signage  
Awards



Commercial Integrator  
Winner2012



Queens Awards for  
Enterprise: 2012



Rental & Staging  
Best of Show 2019



AV Technology  
Best of Show 2015



Rental & Staging Systems  
Award 2016



Rental & Staging Systems  
Award 2015





**LEDFusion Pro**

A high-performance flagship all-in-one LED display designed to meet the needs of professional display applications. By using high-quality 4in1 LED and the new generation of UltraX image engine, the image detail, contrast and color performance have been greatly improved. The product sizes include 130-inch 1080P (P1.5) display and 163-inch 4K (P0.9375) display.



Ultra Light & Slim  
1.9mm Bezel



Fine Pixel Pitch  
0.9mm / 1.5mm



Wide Viewing Angle  
Without color shift



45% lower power  
consumption\*



Long Life Time  
>100,000 hr

\*LEDFusion Pro A130C and LEDFusion A130 power consumption comparison





## High Quality LED Architecture

### Standby Mode

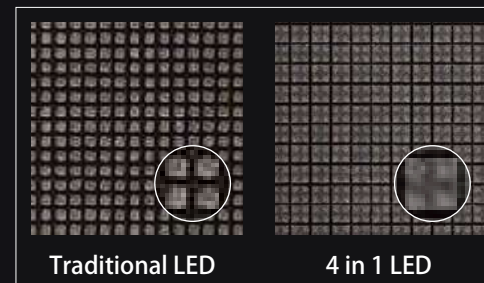
Centralized power design to save more power  
Standby < 0.5W and Lan standby conforms with ErP regulations.

### Ensure Eco-Efficiency

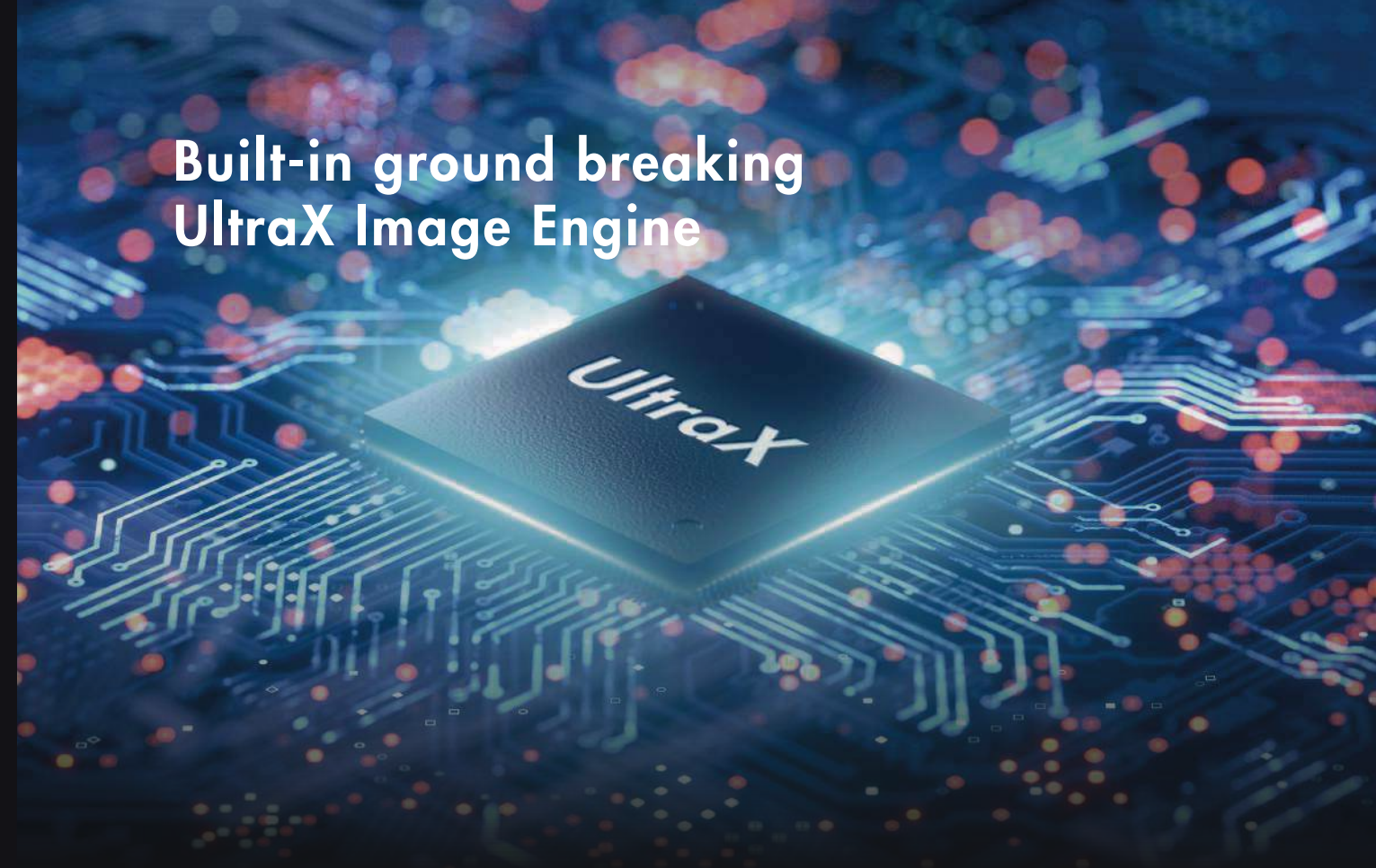
At 25°C LED Fusion can have better thermal performance. The temp on LED surface is 10°C lower than others and that less heat accumulation and interference.

### Robust 4in1 LED

4 in 1 LED is composed of 4 pixels, and the thrust strength is 4 times stronger than the traditional 1010 SMD structure. Efficiently reduce the maintenance cost compare to the conventional structure.



## Built-in ground breaking UltraX Image Engine



- 4K scaling
- Low latency video processing
- New Grand Area Calibration
- 10,000:1 Super Contrast ratio
- Nearly 100% DCIP3 color gamut
- 22bit + Gray Scale Enhancement
- Great PWM visual effect in low brightness
- No Coupling, No Crosstalk

Featuring the ground-breaking UltraX image engine, LEDFusionPro delivers supreme visual qualities. It also enhances image calibration abilities, color reproduction, grayscale, contrast ratio, and energy efficiency.

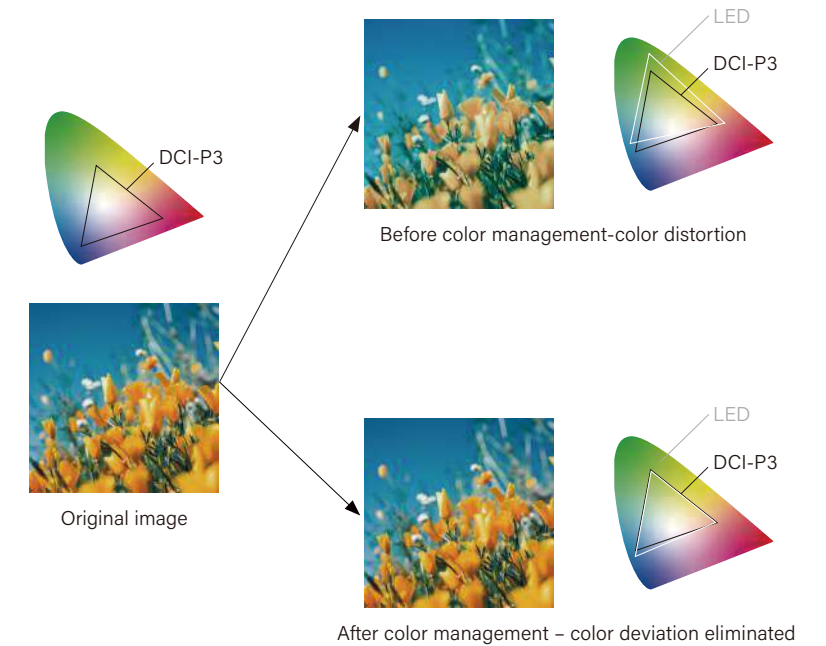
Calibre's exclusive image processing technology and high performance driver IC and LED controller.





## Precise Color Booster Technology

By Precise Color Booster technology, the color deviation has been eliminated. Near 100% DCI-P3 color gamut coverage reproduces extensive vibrant colors with details and delivers a truly immersive experience.



\*DCI-P3 High-end Digital Film Color Standard



## Grand Area Calibration

The Grand Area Calibration includes high brightness and low brightness calibration. Keeping precise colors and more details in dark areas at the same time.



7



## 22bit+ Dynamic Mapping

22bit+ Dynamic Mapping technology Show up 256 gray levels and have better performance even in low brightness status.



8

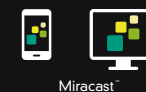


# Super Contrast Ratio 10,000:1

All new UltraX image engine can precisely control LED brightness to 0.06 nit. Pure black and 10000:1 contrast ratio shows more details and vivid color.



## Effortlessly Screen Control



### Powerful Screen Sync

Build-in Tapcast App allows Miracast, image/video/music playback, camera, and screen sync to the mobile device and wireless annotation. (Optional)



### Fusion Connect

- Fusion Connect App (iOS / Android)
- Editing Playlists
- Uploading videos/images/documents
- Using your mobile device as a remote control





**2 x 2**  
**LED Fusion Pro**  
**W260CF-15**

\*Customized sizes are available,  
contact Calibre sales representative  
for more information.

# More than All-in-One

Create Immersive Viewing Experiences

## Calibre Exclusive Image Processor for Wide Screens



**HQPro 1000**

### Features

One box to manage up to four FHD AiO with flexible layout.

### I/O Capacity

- Modular card design with flexible I/O arrangement
- Support up to 4 x 4K input, or 16 x 2K input with accessory box
- Streaming in/out with with accessory box.

### Image Processing

- 4K50/60Hz 4:4:4 RGB processing and 4K EDID management
- Genlock system with ultra low latency (less than 1 frame)
- Built-in 4 x 4K scalers to process each input independently.

### Canvas Management

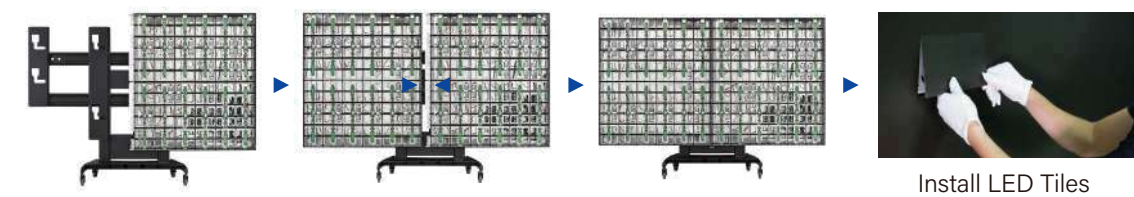
- Freely arrange 4 x 4K input on a 4K canvas
- Seamless switch to change input source
- Instant preset switch to change screen layout.



# Available for Various Scenarios



## A130C-15 Simple Installation in 1 Hour



## A163C-09



# LED Fusion Pro Specification

Model	A130C-15 (FHD)		A163C-09 (4K UHD) *Preliminary
Size	130"		163"
Pitch	1.5 mm		0.9375 mm
Resolution (W*H)	1920 x 1080		3840 x 2160
Dimensions (W*H)	2881 x 1621 mm		3601 X 2026 mm
Dimensions (W*H*D) With Bezel	2885 X 1625 X 35 mm		3605 X 2030 X 35 mm
Weight	125 kg / 276 lb		191 kg / 421lb
LED Tile Size	240 x 135 mm		300 x 168.75 mm
LED Tile Resolution	160 x 90		320 x 180
LED Architecture	Common Cathode		Common Cathode
LED Type	4 in 1 LED		4 in1 LED
Brightness (Max)	500 nits	600 nits	600 nits
Color Depth	16 bit		16 bit
Contrast	8,000 : 1	10,000 : 1	10,000 : 1
View Angle	170°		170°
Display Refresh Rate	3840 Hz		3840 Hz
Operating Voltage & Max Power	AC 100V-240V 1500W	AC 200V-240V 2000W	AC 200V-240V 3000W
I/O	HDMI-1.4b*1 & HDMI Loop*1, HDMI-1.4a*1, HDMI Monitor_output*1, 3G-SDI*1, USB*2, HDBaseT *1, Audio Line_out 3.5mm*1, RS232_in, RS232_out, RJ45 LAN Control		
Operation Conditions	Temp : -10 °C ~ + 40 °C ; Humidity : 10 % ~ 85 %		





[proavsales@calibreuk.com](mailto:proavsales@calibreuk.com)



APAC, Australia & NZ  
+886 919 258 464



[www.calibreuk.com](http://www.calibreuk.com)

Europe  
+44 1274940770



UK Office: Springwell House, 9 Springwell Court, Leeds LS12 1AL, United Kingdom  
APAC Office: No. 11, Li Hsing Rd., Science Park, Hsinchu, Taiwan, R.O.C.



Follow Us on



Version 2021.v1