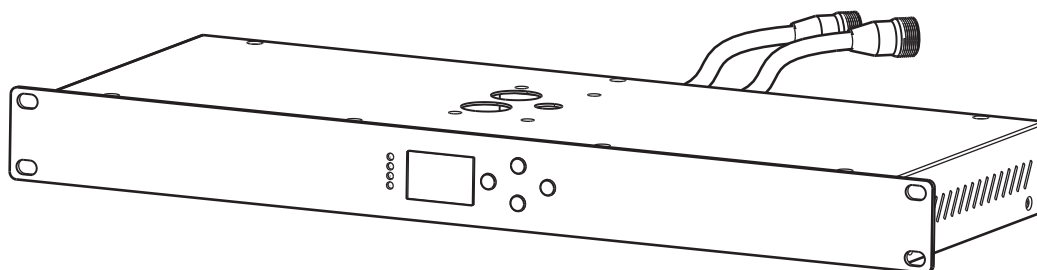


ÉPIX

FLEX DRIVE

Quick Reference Guide

English	EN
Español	ES
Français	FR
Deutsch	DE
Nederlands	NL



About This Guide

The ÉPIX Flex Drive Quick Reference Guide (QRG) has basic product information such as connection, mounting, menu options, and control values. Download the User Manual from www.chauvetprofessional.com for more details.

Disclaimer

The information and specifications contained in this QRG are subject to change without notice.

LIMITED WARRANTY

FOR WARRANTY REGISTRATION AND COMPLETE TERMS AND CONDITIONS PLEASE VISIT OUR WEBSITE.

For Customers in the United States and Mexico: www.chauvetlighting.com/warranty-registration.

For Customers in the United Kingdom, Republic of Ireland, Belgium, the Netherlands, Luxembourg, France, and Germany: www.chauvetlighting.eu/warranty-registration.

Chauvet warrants that this product shall be free from defects in material and workmanship under normal use, for the period specified in, and subject to the exclusions and limitations set forth in the full limited warranty on our website. This warranty extends only to the original purchaser of the product and is not transferable. To exercise rights under this warranty, you must provide proof of purchase in the form of an original sales receipt from an authorized dealer that shows the product name and date of purchase. THERE ARE NO OTHER EXPRESS OR IMPLIED WARRANTIES. This warranty gives you specific legal rights. You may also have other rights that vary from state to state and country to country. This warranty is valid only in the United States, United Kingdom, Republic of Ireland, Belgium, the Netherlands, Luxembourg, France, Germany and Mexico. For warranty terms in other countries, please consult your local distributor.

Safety Notes

These Safety Notes include important information about installation, use, and maintenance.

- DO NOT open this product. It contains no user-serviceable parts.
- DISCONNECT from power before cleaning or replacing the fuse.
- To eliminate unnecessary wear and improve its lifespan, during periods of non-use completely disconnect the product from power via breaker or by unplugging it.
- CAUTION: When transferring product from extreme temperature environments, (e.g. cold truck to warm humid ballroom) condensation may form on the internal electronics of the product. To avoid causing a failure, allow product to fully acclimate to the surrounding environment before connecting it to power.
- CAUTION: This product's housing may be hot when lights are operating.
- Mount this product in a location with adequate ventilation, at least 20 in (50 cm) from adjacent surfaces.
- DO NOT leave any flammable material within 50 cm of this product while operating or connected to power.
- USE a safety cable when mounting this product overhead.
- DO NOT operate this product outdoors or in any location where dust, excessive heat, water, or humidity may affect it. (IP20)
- DO NOT operate this product if the housing, ports, or cables appear damaged.
- DO NOT connect this product to a dimmer or rheostat.
- Replace the fuse with one of the same type and rating.
- ONLY connect this product to a grounded and protected circuit.
- In the event of a serious operating problem, stop using immediately.
- The maximum ambient temperature is 113 °F (45 °C). Do not operate this product at higher temperatures.

Contact

Outside the U.S., United Kingdom, Ireland, Benelux, France, Germany, or Mexico, contact your distributor to request support or return a product. Refer to [Contact Us](#) at the end of this QRG for contact information.

What is Included

- ÉPIX Flex Drive
- Power Cord
- Quick Reference Guide

AC Power

This product has an auto-ranging power supply that works with an input voltage range of 100 to 240 VAC, 50/60 Hz.

AC Plug

Connection	Wire (U.S.)	Wire (Europe)	Screw Color
AC Live	Black	Brown	Yellow/Brass
AC Neutral	White	Blue	Silver
AC Ground	Green/Yellow	Green/Yellow	Green



To eliminate wear and improve its lifespan, during periods of non-use completely disconnect the product from power via breaker or by unplugging it.

Fuse Replacement

1. Disconnect the product from power.
2. Wedge the tip of a flat-head screwdriver into the slot of the fuse holder.
3. Pry the safety cap out of the housing.
4. Remove the blown fuse from the clip on the front of the safety cap and replace with a fuse of the exact same type and rating.
5. Re-insert the fuse holder and reconnect power.

Signal Connections

The ÉPIX Flex Drive can link to a controller or controller software using an ethernet or 5-pin DMX connection. If using other Art-Net™, sACN, or DMX-compatible products with the ÉPIX Flex Drive, they can all be controlled individually on a single network. See the User Manual for information about how to connect and configure the product for these signals.

Control Personalities

The ÉPIX Flex Drive uses DMX, Art-Net™, and sACN for its control personalities:

Personality	Channels	Description
17 Channel	17	Dimmer, foreground and background RGB control, strobe, auto programs, program speed, and offset, test mode
34 Channel	17 per output	Enables output ports to be addressed separately for individual 17-channel control
Pixel	720 per ÉPIX Flex 20	Complete pixel control. Only 170 LEDs are accessible by DMX. An ethernet protocol (Art-Net™ or sACN) with multiple universes must be used to access all connected LEDs.

Art-Net™ Connection

Art-Net™ is an Ethernet protocol that uses TCP/IP that transfers large amount of DMX512 data using an ethernet connection over a large network. An Art-Net™ protocol document is available from www.chauvetprofessional.com. Art-Net™ Designed by and Copyright Artistic Licence Holdings Ltd.

sACN Connection

Also known as ANSI E1.31, Streaming-ACN is an Ethernet protocol that uses the layering and formatting of Architecture for Control Networks to transport DMX512 data over IP or any other ACN compatible network.

DMX Connection

The ÉPIX Flex Drive will work with a DMX controller using a 5-pin DMX data connection. A DMX Primer is available from www.chauvetprofessional.com.

RDM (Remote Device Management)

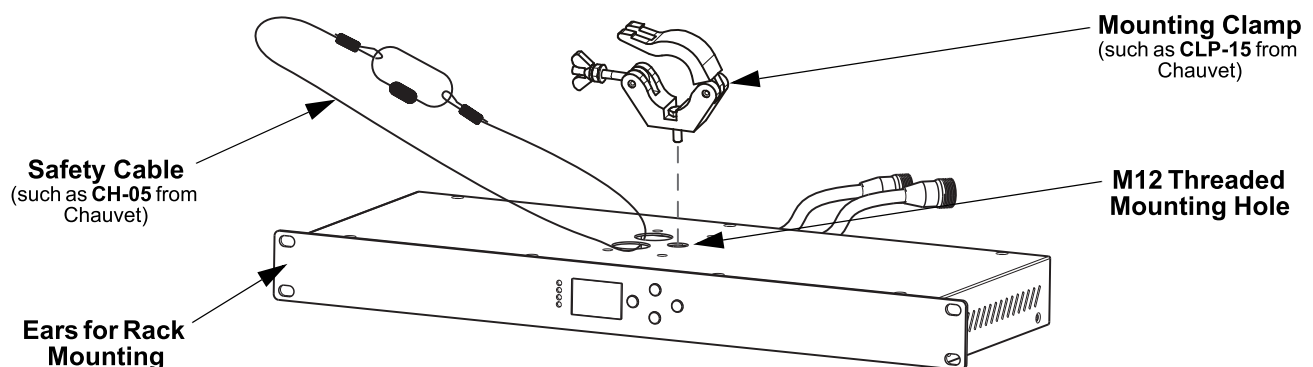
Remote Device Management, or RDM, is a standard for allowing DMX-enabled devices to communicate bi-directionally along existing DMX cabling. The ÉPIX Flex Drive supports RDM protocol that allows feedback to make changes to menu map options. Download the User Manual from www.chauvetprofessional.com for more details.

The ÉPIX Flex Drive also supports RDM over Art-Net™.

Mounting

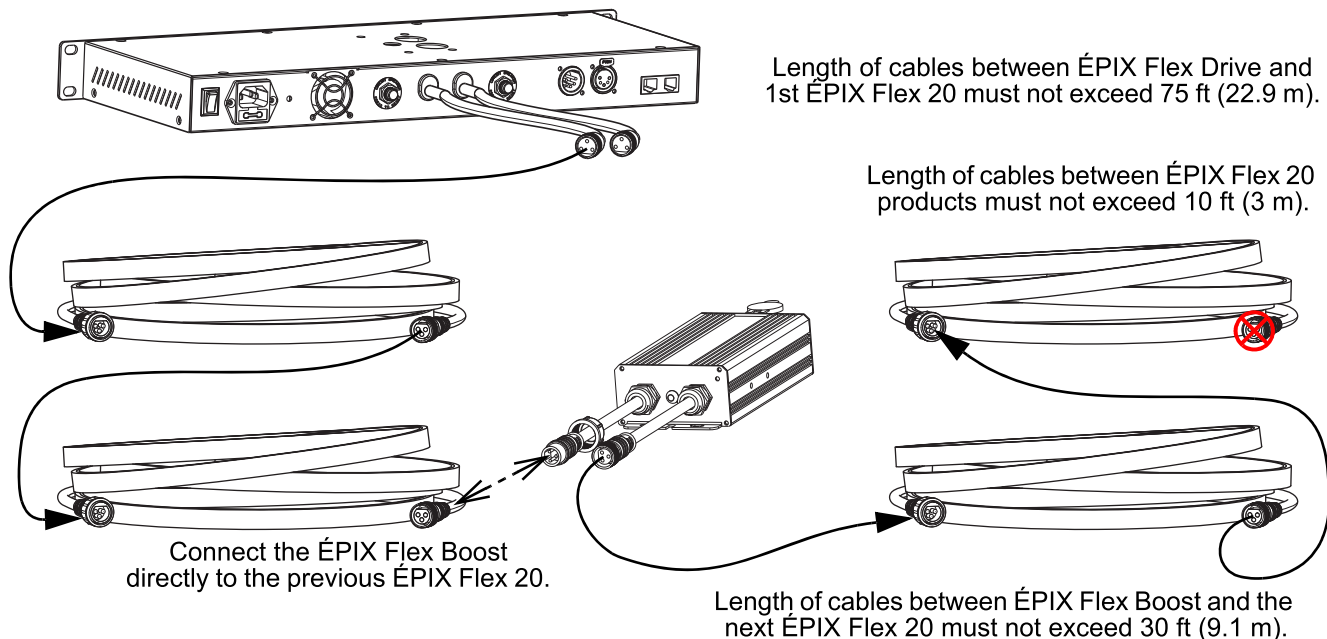
Before mounting this product, read the [Safety Notes](#). Make sure the mounting clamp is capable of supporting the weight of the product. For our CHAUVET Professional line of mounting clamps, go to <http://trusst.com/products>.

Mounting Diagram



Connecting ÉPIX Flex Products

The ÉPIX Flex Drive is the power supply for the ÉPIX Flex series of products. Each product must be daisy-chained together in series. This power supply is capable of powering up to 1,920 LEDs (960 from each port).



The ÉPIX Flex Drive can support 2 ÉPIX Flex 20 products with each port by itself, for a total of 4 ÉPIX Flex 20 products.

Connect an ÉPIX Flex Boost after the second ÉPIX Flex 20 product on each port to enable the ÉPIX Flex Drive to support an additional 2 ÉPIX Flex 20 products with each port. This increases the total to 8 ÉPIX Flex 20 products (4 per port).

The recommended connection order from each port of the ÉPIX Flex Drive is as follows:

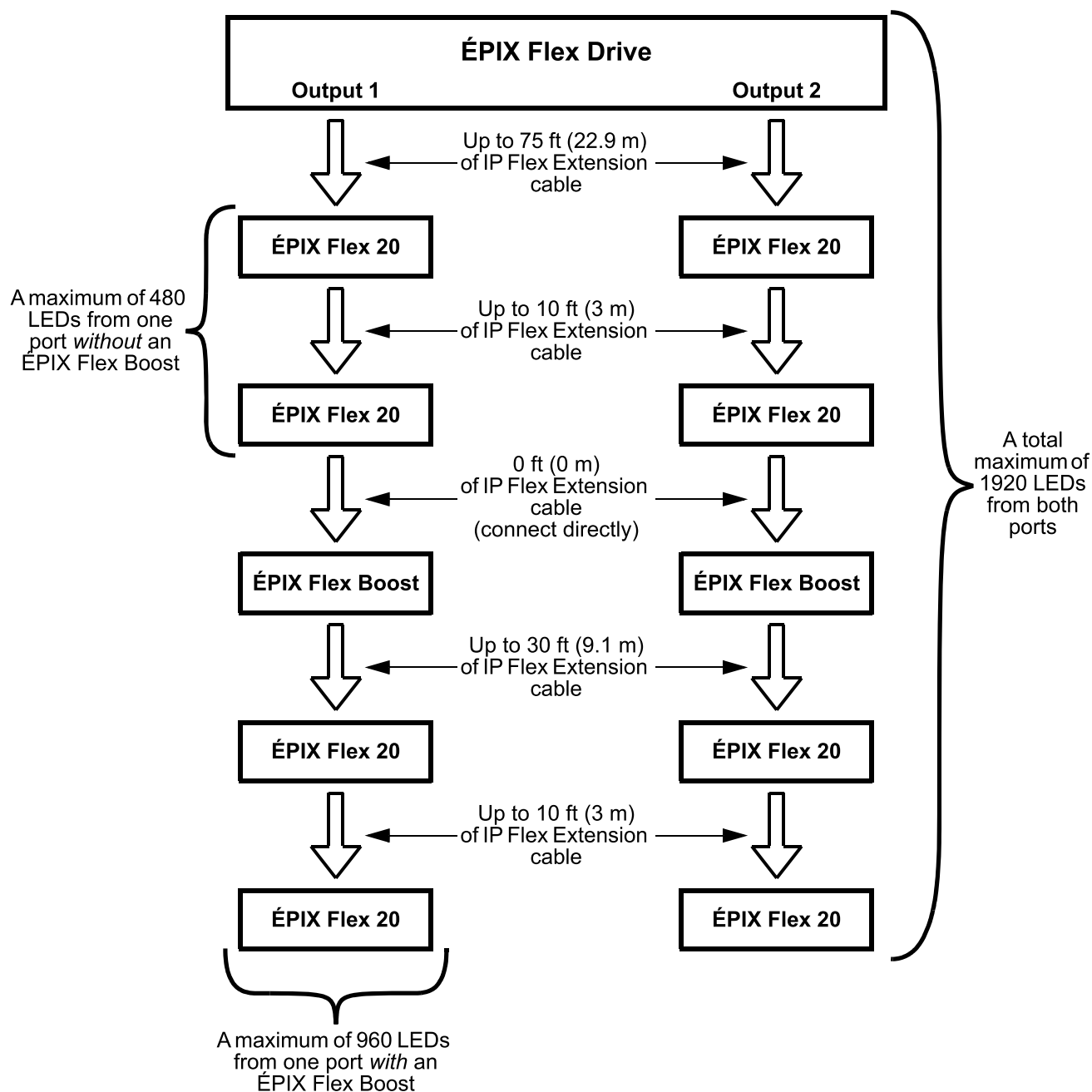
1. ÉPIX Flex Drive port
2. ÉPIX Flex 20
3. ÉPIX Flex 20
4. ÉPIX Flex Boost
5. ÉPIX Flex 20
6. ÉPIX Flex 20 (end)

- Make sure the length of cables between each ÉPIX Flex Drive port and the first ÉPIX Flex 20 does not exceed 75 ft (22.9 m).
- Make sure the length of cables between each ÉPIX Flex 20 does not exceed 10 ft (3 m).
- Make sure the ÉPIX Flex Boost is plugged directly into the previous ÉPIX Flex 20.
- Make sure the length of cables between the ÉPIX Flex Boost and the next ÉPIX Flex 20 does not exceed 30 ft (9.1 m).

Use ONLY CHAUVET Professional cables with the ÉPIX Flex Drive. For our line of cables compatible with the ÉPIX Flex Drive, go to <https://www.chauvetprofessional.com/accessories>.



ÉPIX Flex Products Flowchart



Control Panel Description

Button	Function
<MENU>	Exits from the current menu or function
<UP>	Navigates upwards through the menu list and increases the numeric value when in a function
<DOWN>	Navigates downwards through the menu list and decreases the numeric value when in a function
<ENTER>	Enables the currently displayed menu or sets the currently selected value into the selected function

Menu Map

Main Level	Programming Levels			Description	
1.Operating Mode	1.Standalone			Selects the control protocol	
	2.Art-Net				
	3.sACN				
	4.DMX				
2.Personality	1.17 Channel			Sets the control personality (see Control Personalities)	
	2.34 Channel				
	3.Pixel				
3.Port Setup	1.Output 1	1.DMX Start Address	1–496	Sets the starting address for Output 1	
		2.Network Universe	0–256	Sets the lowest of the consecutive universes to which Output 1 is assigned (range determined by Operating Mode)	
		3.LED Quantity	1–960	Sets the number of LEDs controlled by Output 1	
	2.Output 2	1.DMX Start Address	1–496	Sets the starting address for Output 2 in 34 Channel mode and Pixel mode	
		2.Network Universe	0–256	Sets the lowest of the consecutive universes to which Output 2 is assigned (range determined by Operating Mode)	
		3.LED Quantity	1–960	Sets the number of LEDs controlled by Output 2	
4.Set IP Mode	1.Manual IP	_ _ _ . _ _ _ . _ _ _ . _ _ _		Sets a custom IP address (0–255)	
	2.Static IP			Sets a preset IP address	
5.Set Netmask	A. 255.000.000.000			Sets the net mask	
	B. 255.255.000.000				
	C. 255.255.255.000				
6.Standalone Mode	1.User Color	1.Red:	000–255	Combine red, green, and blue to make a custom color	
		2.Green:			
		3.Blue:			
	2.Preset Color	1.Red			Preset static colors
		2.Green			
		3.Blue			
		4.Cyan			
		5.Magenta			
		6.Yellow			
		7.White			
	3.Automatic	1.Program:	000–042	Selects an automatic program	
2.Speed:		000–100	Sets the automatic program speed		
7.Set LCD Backlight	On			Display backlight always on	
	30s			Turns off display backlight after 30 seconds of inactivity	
8.Set Display	Normal			Rotates display 180°	
	Inverted				
9.Factory Reset	NO			Resets the product to factory defaults	
	YES				
10.Fixture UID	_ _ _ _ _			Shows product UID	
11.Firmware Version	B _ _ V _ _ _ _			Shows current firmware version	

Control Values

17 Channel/34 Channel

Channel	Function	Value	Percent/Setting
1	Master Dimmer	000 ⇔ 255	0–100%
2	Foreground Red	000 ⇔ 255	0–100%
3	Foreground Green	000 ⇔ 255	0–100%
4	Foreground Blue	000 ⇔ 255	0–100%
5	Foreground Strobe	000 ⇔ 010	No function
		011 ⇔ 050	Strobe, slow to fast
		051 ⇔ 090	Random strobe, slow to fast
		091 ⇔ 140	Synchronized random strobe, slow to fast
		141 ⇔ 255	Reserved for future use
6	Background Red	000 ⇔ 255	0–100%
7	Background Green	000 ⇔ 255	0–100%
8	Background Blue	000 ⇔ 255	0–100%
9	Background Strobe	000 ⇔ 010	No function
		011 ⇔ 050	Strobe, slow to fast
		051 ⇔ 090	Random strobe, slow to fast
		091 ⇔ 140	Synchronized random strobe, slow to fast
		141 ⇔ 255	Reserved for future use
10	Foreground Program	000	No function
		001 ⇔ 020	Automatic program 0
		021 ⇔ 040	Automatic program 1
		041 ⇔ 060	Automatic program 2
		061 ⇔ 065	Automatic program 3
		066 ⇔ 080	Multi-color program
		081 ⇔ 100	Color fade program 1
		101 ⇔ 120	Color fade program 2
		121 ⇔ 140	Color fade program 3
11	Foreground Speed	141 ⇔ 255	Reserved for future use
		000 ⇔ 255	Foreground program speed, slow to fast
		000 ⇔ 255	Foreground program offset delay, short to long
		000	No function
		001 ⇔ 020	Automatic program 0
		021 ⇔ 040	Automatic program 1
		041 ⇔ 060	Automatic program 2
		061 ⇔ 065	Automatic program 3
		066 ⇔ 255	Reserved for future use
14	Background Speed	000 ⇔ 255	Background program speed, slow to fast
15	Background Offset	000 ⇔ 255	Background program offset delay, short to long
16	No Function	000 ⇔ 255	No function

Channel	Function	Value	Percent/Setting
17	Test Mode	000 ⇔ 020	No function
		021 ⇔ 030	Test 1 (white)
		031 ⇔ 040	Test 2 (color fade)
		041 ⇔ 050	Test 3 (color scroll)
		051 ⇔ 060	Test 4 (red)
		061 ⇔ 070	Test 5 (green)
		071 ⇔ 080	Test 6 (blue)
		081 ⇔ 255	Reserved for future use



- 34 Channel mode is identical to 17 Channel mode.
- In 17 Channel mode, Output 2 is addressed the same as Output 1.
- In 34 Channel mode, Output 2 can be addressed separately from Output 1.

Pixel

Channel	Function	Value	Percent/Setting
1	Red 1	000 ⇔ 255	0–100%
2	Green 1	000 ⇔ 255	0–100%
3	Blue 1	000 ⇔ 255	0–100%
4	Red 2	000 ⇔ 255	0–100%
5	Green 2	000 ⇔ 255	0–100%
6	Blue 2	000 ⇔ 255	0–100%
...
505	Red 169	000 ⇔ 255	0–100%
506	Green 169	000 ⇔ 255	0–100%
507	Blue 169	000 ⇔ 255	0–100%
508	Red 170	000 ⇔ 255	0–100%
509	Green 170	000 ⇔ 255	0–100%
510	Blue 170	000 ⇔ 255	0–100%
511	Red 171	000 ⇔ 255	0–100% (not accessible by DMX)
512	Green 171	000 ⇔ 255	0–100% (not accessible by DMX)



- Only 170 LEDs are accessible by DMX in Pixel mode.
- An ethernet protocol (Art-Net™ or sACN) with multiple universes must be used to access all connected LEDs in Pixel mode.