

ASM10001/2

WALL BRACKET FOR CDD5 AND ADORN A40 AND A55

Features

- Vertical and horizontal tilt and pan
- Weatherised for outdoor installation
- Available in white (ASM10001) or black (ASM10002)
- This bracket is supplied with CDD5, A40 and A55 speakers. This is the replacement part

Applications

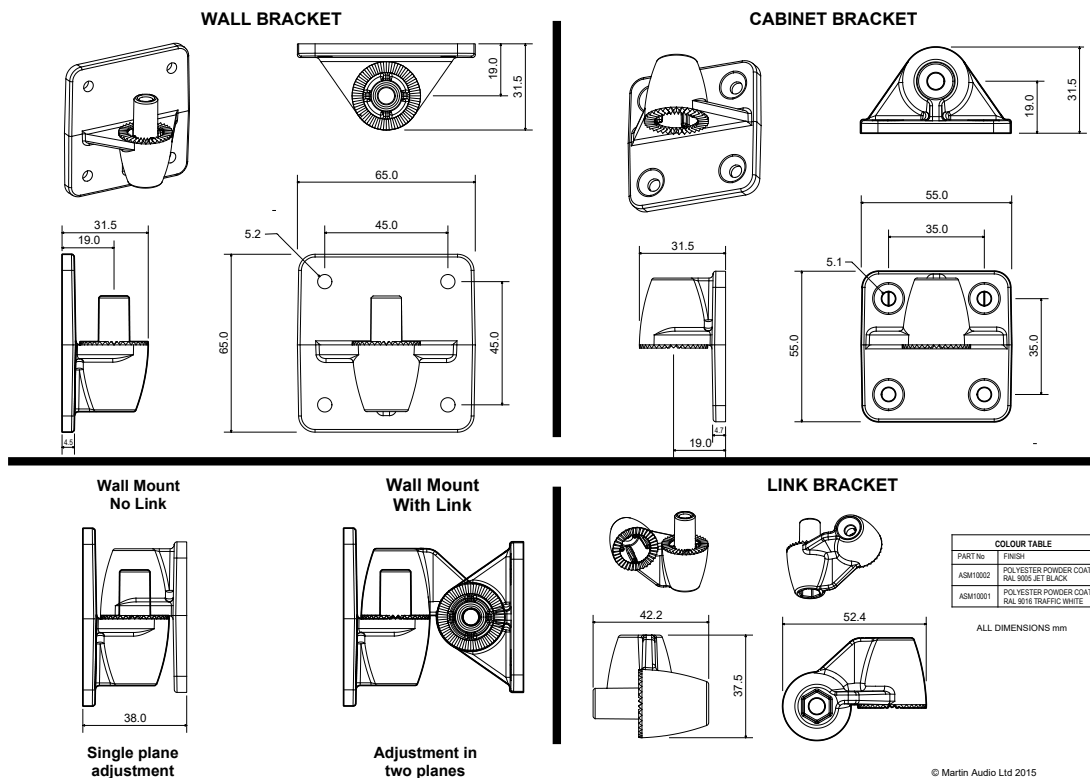
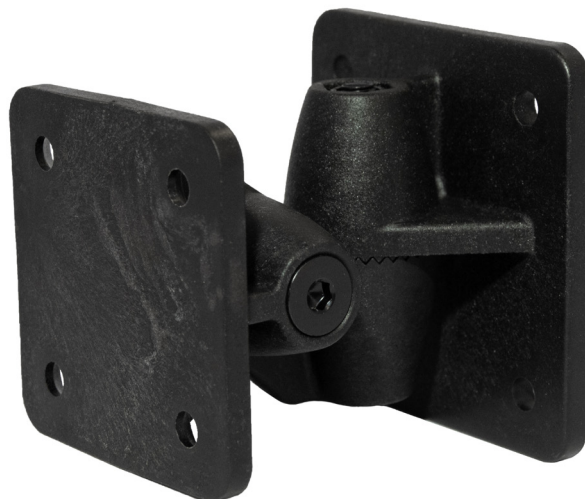
- Installation of CDD5 and ADORN A40 and A55

Contents

- 1 x ASM10001 or ASM10002
- 2 x M5 screw
- 2 x M5 nut

Technical Specifications

WEIGHT	0.12kg
MATERIAL	Weatherised ABS plastic



ASM10001/2

WALL BRACKET FOR CDD5 AND ADORN A40 AND A55

CDD5	ORIENTATION		
DIRECTION	PORTRAIT	LANDSCAPE PORT LEFT	LANDSCAPE PORT RIGHT
TILT +	+25°	+45°	+45°
TILT -	-70°	-60°	-60°
PAN RIGHT	+45°	+30°	+45°
PAN LEFT	-45°	-45°	-30°